

## IMPORTANT: We are the new distributor of R-Biopharm in Belgium!

### INTRODUCTION

Besides manufacturing immunoassays for human *in vitro* diagnostics, apDia also distributes IVD's from other manufacturers. We offer a.o. molecular diagnostics and immunochromatographic rapid tests (cassette or dipstick) from R-Biopharm.

### MOLECULAR DIAGNOSTICS

Molecular diagnostics allow for an early and specific diagnosis by direct detection of DNA or RNA of the pathogen. The R-Biopharm **RIDA®GENE** kits are based on real-time PCR technology for detection of enteropathogenic viruses and bacteria in fecal samples.



Source: [http://www.nist.gov/oles/forensics/biology\\_dna.cfm](http://www.nist.gov/oles/forensics/biology_dna.cfm)

The CE marked **RIDA®GENE** kits can be used in a flexible way for routine diagnostics. They are available in different versions which can be run on commonly used real-time PCR cyclers, such as LightCycler, SmartCycler or ABI series. A variety of commercial manual or automated extraction systems can be used to obtain the DNA or RNA of the pathogen from stool samples.

Kits are available for the detection of a.o. **MRSA, Clostridium difficile, EHEC/EPEC/EAEC/ETEC, STEC, Salmonella/Campylobacter/Yersinia, nosocomial diarrhea, Influenza, Rotavirus, Adenovirus, Norovirus, Giardia, Cryptosporidium** and **Entamoeba**. Contact us for detailed information regarding individual or specific kits,

### VIRAL GASTROENTERITIS RAPID TESTS

apDia offers **RIDA®QUICK** immunochromatographic tests for the qualitative determination of the 2 most important viral causative agents of enteritis in stool samples. Kits containing 25 dipsticks or 20 cassettes are available.

**RIDA®QUICK Rotavirus (N0902), dipstick**

**RIDA®QUICK Rotavirus (N0903), cassette**

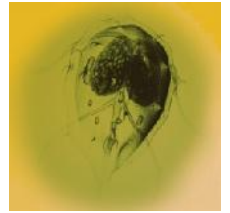
**RIDA®QUICK Rotavirus/Adenovirus Combi (N1002), dipstick**

**RIDA®QUICK Rotavirus/Adenovirus Combi (N1003), cassette**

### PARASITIC GASTROENTERITIS RAPID TESTS

Additionally, we can provide **RIDA®QUICK** immunochromatographic tests for the qualitative determination of the 3 most important parasitic causative agents of enteritis in stool samples. Kits of 25 dipsticks or 20 cassettes are available

for identification of the pathogenic intestinal protozoa *Giardia lamblia*, *Cryptosporidium parvum* and/or *Entamoeba histolytica*. These tests enable detection also if vegetative stages and cysts are no longer detectable by microscopy.



**N1102 Giardia (dipstick)**

**N1103 Giardia (cassette)**

**N1122 Cryptosporidium/Giardia Combi (dipstick)**

**N1123 Cryptosporidium/Giardia Combi (cassette)**

**N1202 Cryptosporidium (dipstick)**

**N1203 Cryptosporidium (cassette)**

**N1702 Entamoeba (dipstick)**

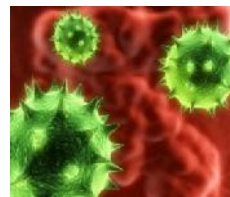
**N1703 Entamoeba (cassette)**

**N1722 Cryptosporidium/Giardia/Entamoeba Combi (dipstick)**

**N1723 Cryptosporidium/Giardia/Entamoeba Combi (cassette)**

### NOROVIRUS RAPID TEST

Noroviruses are a major cause of gastroenteritis world-wide with an estimated 23 million cases a year in the USA<sup>1,2</sup>. They are frequently involved in outbreaks in communal facilities, such as nursing homes, hospitals, day nurseries and prisons<sup>3,4</sup>.



Source: <http://deadlymicrobes.com/norovirus-causes-symptoms-and-treatment>

The **RIDA®QUICK Norovirus Test (N1402, 25 cassettes)** is a quick qualitative immunochromatographic test for the determination of Genogroup 1 (GGI) and Genogroup 2 (GG II) noroviruses in stool samples. The new test can be used without predilution of stool specimen and yields reliable results in only 4 steps. The test has an excellent performance of 92 % sensitivity and 98 % specificity.

### REFERENCES

1. Mead PS et al. Food-related illness and death in the United States. *Emerg. Infect. Dis.* 1999; **5**: 607-625.
2. Glass RJ et al. The epidemiology of enteric caliciviruses from humans: a reassessment using new diagnostics. *J. Infect. Dis.* 2000; **181**(Suppl 2): S254-261.
3. Kaplan JE et al. An outbreak of acute nonbacterial gastroenteritis in a nursing home: demonstration of person-to-person transmission by temporal clustering of cases. *Am. J. Epidemiol.* 1982; **116**: 940-948.
4. Johnston CP et al. Outbreak management and implications of a nosocomial Norovirus outbreak. *CID* 2007; **45**: 534-540.

On the backside of this newsletter you can find a reply form to request more detailed information about the products mentioned above.

**IMPORTANT: We are the new distributor of R-Biopharm in Belgium!**

---

TITLE: MR / MRS / MS / DR

NAME: \_\_\_\_\_

SURNAME: \_\_\_\_\_

COMPANY OR INSTITUTE: \_\_\_\_\_

STREET: \_\_\_\_\_

N°: \_\_\_\_\_ BOX: \_\_\_\_\_

POSTAL CODE: \_\_\_\_\_

CITY: \_\_\_\_\_

PHONE NUMBER: \_\_\_\_\_

E-MAIL ADDRESS: \_\_\_\_\_

---

I wish to receive additional information about following topics:

- MOLECULAR DIAGNOSTICS
- VIRAL GASTROENTERITIS RAPID TESTS
- PARASITIC GASTROENTERITIS RAPID TESTS
- NOROVIRUS RAPID TEST
- I AM USING R-BIOPHARM PRODUCTS ALREADY. HOW CAN I ORDER R-BIOPHARM PRODUCTS FROM apDia?
- OTHER: .....

Sales representative Belgium: Laurent Nijs

Sales representative The Netherlands: James Kessels

Please, send us this reply form by fax using the number +32 (0)14 81 29 45, by e-mail to [admin@apdia.be](mailto:admin@apdia.be) or by regular mail to apDia nv, Hertoginstraat 82, B-2300 Turnhout, Belgium.