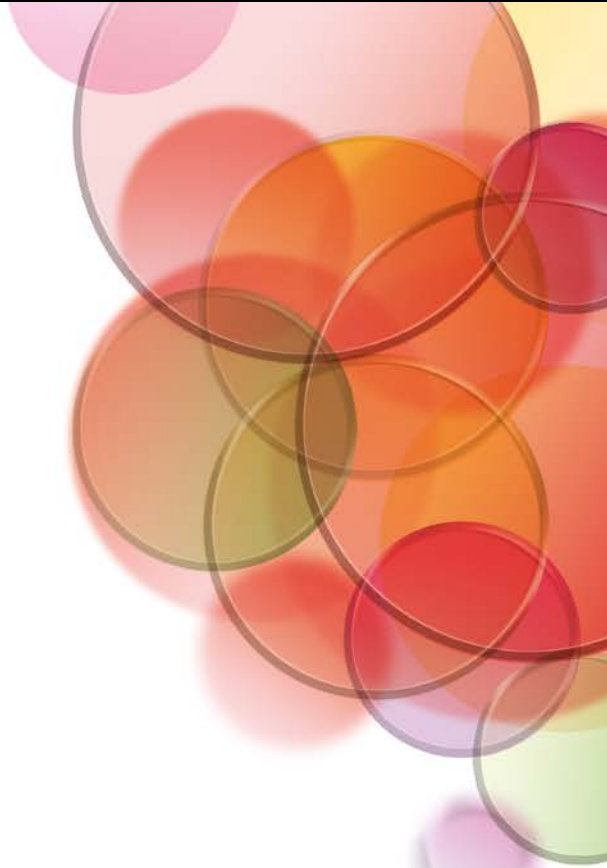
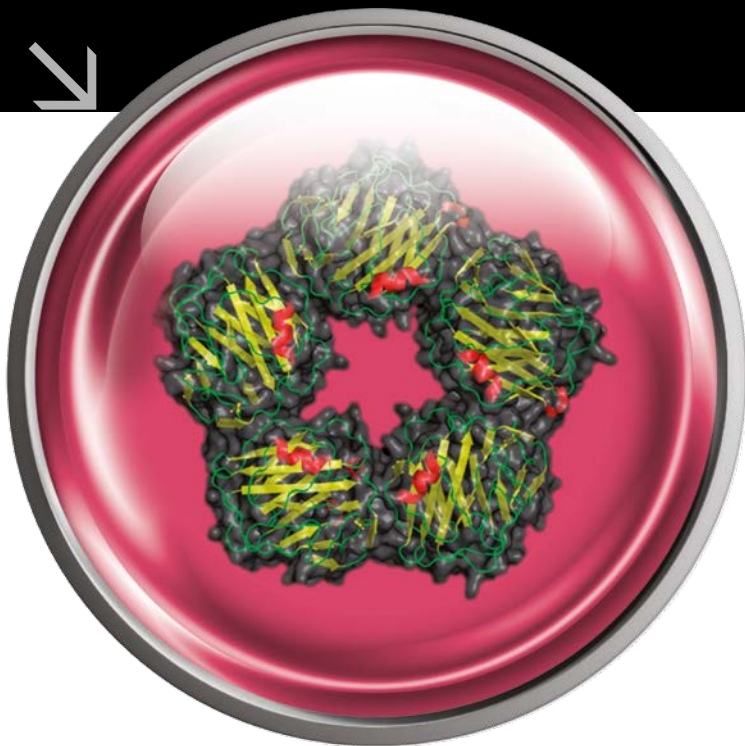


**CRP ELISA**  
**REF: 740001**

- ∨ **CE MARKED**
- ∨ **CALIBRATION RANGE:** 0 – 100 µg/ml
- ∨ **SENSITIVITY:** < 1 µg/ml
- ∨ **INCUBATION TIME:** 30'+ 30'+10'
- ∨ **AVAILABLE FORMAT:** 96T

# ∨ CRP ELISA



# CRP ELISA

The **apDia CRP ELISA** is an assay for the quantitative determination of C-reactive Protein in human serum/plasma. CRP is an acute-phase protein, produced exclusively in the liver. Serum concentration of CRP increases significantly in cases of both infectious and non-infectious inflammation, of tissue damage and necrosis and in the presence of malignant tumors. CRP is present in the active stages of inflammatory disorders like rheumatoid arthritis, spondylitis ankylosans, Reiter's syndrome, psoriatic arthropathy, systemic lupus erythematosus, polyarthritis, ulcerative colitis and Crohn's disease.

The CRP level increases dramatically following microbial infections and this can be particularly helpful for the diagnosis and monitoring of bacterial septicemia in neonates and other immunocompromised patients at risk.

For measuring CRP in the low range as risk marker for cardiovascular diseases, apDia offers the high sensitivity CRP ELISA. Both tests can be performed according to an identical protocol with interchangeable non-specific reagents.

Standards are calibrated against the NIBSC International Standard 85/506.

The apDia CRP ELISA uses the same dilution buffers, incubation conditions, washing procedures and substrate reactions as the apDia ASLO ELISA to facilitate common use.

**The ELISA kits offered by apDia are validated on open ELISA automates such as the Dynex Instruments.**



Raadsherenstraat 3  
2300 Turnhout, Belgium  
T +32 14 45 35 99  
F +32 14 81 29 45  
admin@apdia.be  
www.apdiagroup.com

